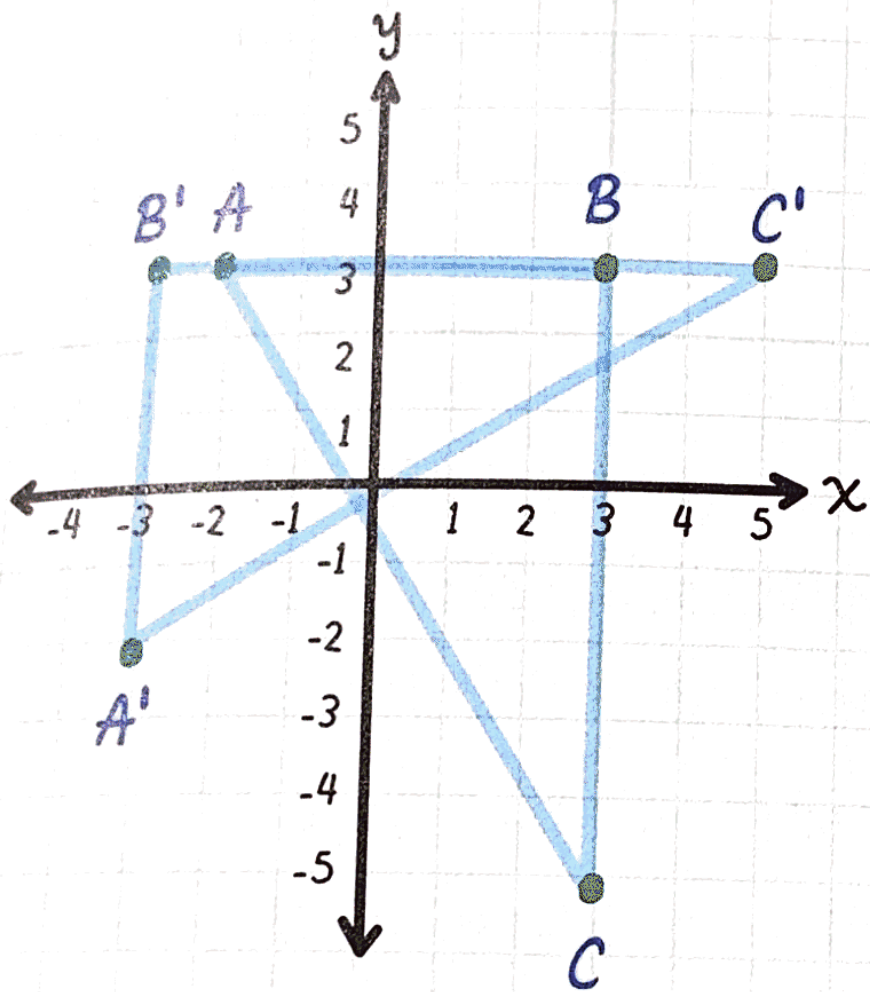


**EXAMPLE:** Rotate  $\triangle ABC$   $270^\circ$  clockwise.

Rotate each point three quadrants clockwise (the coordinates swap three times).



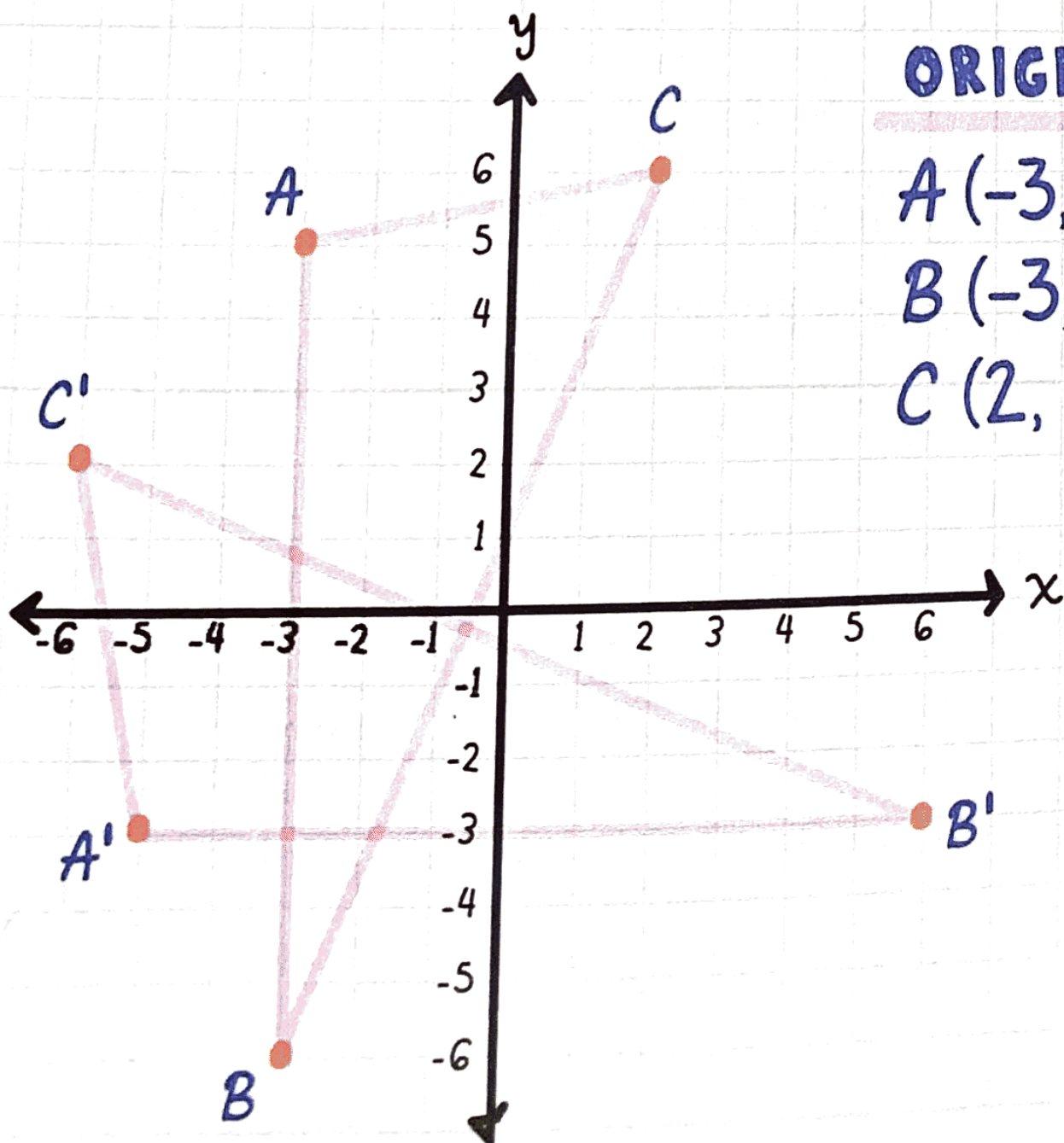
$A$  is  $(-2, 3)$ , so  $A'$  is  $(-3, -2)$ . Both are negative because  $A'$  will be in QIII.

$B$  is  $(3, 3)$ , so  $B'$  is  $(-3, 3)$  because  $B'$  will be in QII.

$C$  is  $(3, -5)$ , so  $C'$  is  $(5, 3)$  because  $C'$  will be in QI.

**EXAMPLE:** Graph the  $\triangle ABC$  and its image after a rotation of  $90^\circ$  counterclockwise.

ONE QUADRANT TO THE LEFT



**ORIGINAL**

**IMAGE**

$A(-3, 5)$

$A'(-5, -3)$

$B(-3, -6)$

$B'(6, -3)$

$C(2, 6)$

$C'(-6, 2)$